

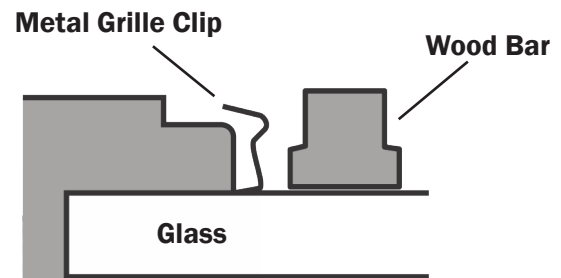


# Surround Grille Installation

LINCOLN WINDOWS & PATIO DOORS

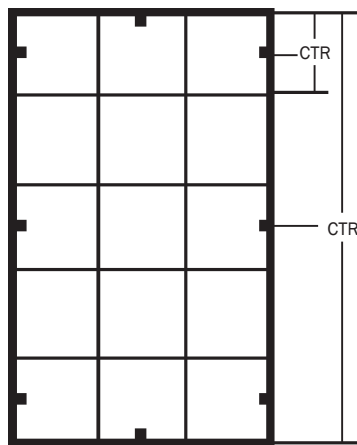
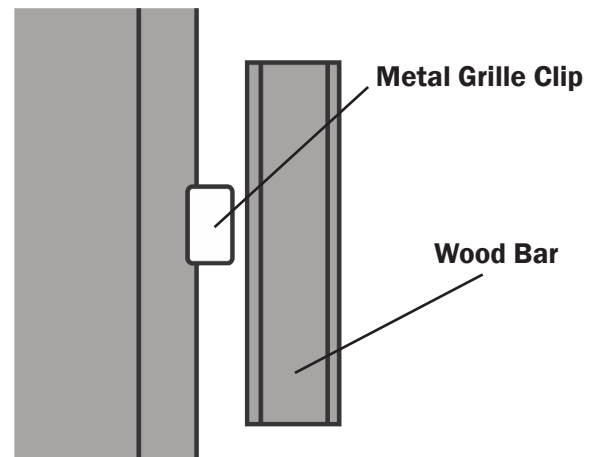
## GRILLE INSTALLATION

1. Use wood bar to insert metal clips into indicated locations. The flat horizontal leg of the clip should be set on the glass and carefully pushed in between the sash frame and the glass. Push lip completely in until the vertical leg touches the frame.
2. Push grille in against one side of sash and “pivot” grille in against the glass.

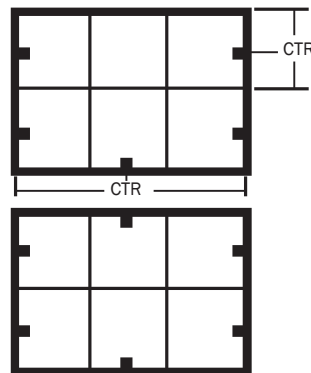


## GRILLE REMOVAL

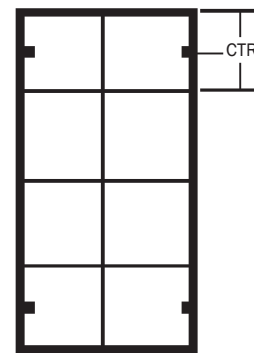
1. To remove grille, push grille against one side of sash and “pivot” opposite grille side out.



**PATIO DOOR/  
CASEMENT/AWNING**



**DH & GLIDER**



**CASEMENT/  
AWNING**

■ Indicates approximate locations.

If you have a Double Hung or Glider, you will need to remove the small metal glazing bead protector by the lock. Using a small flat screwdriver, carefully pry the protector up and off the glazing bead. If not removed, the grille will not fit properly in the sash.

